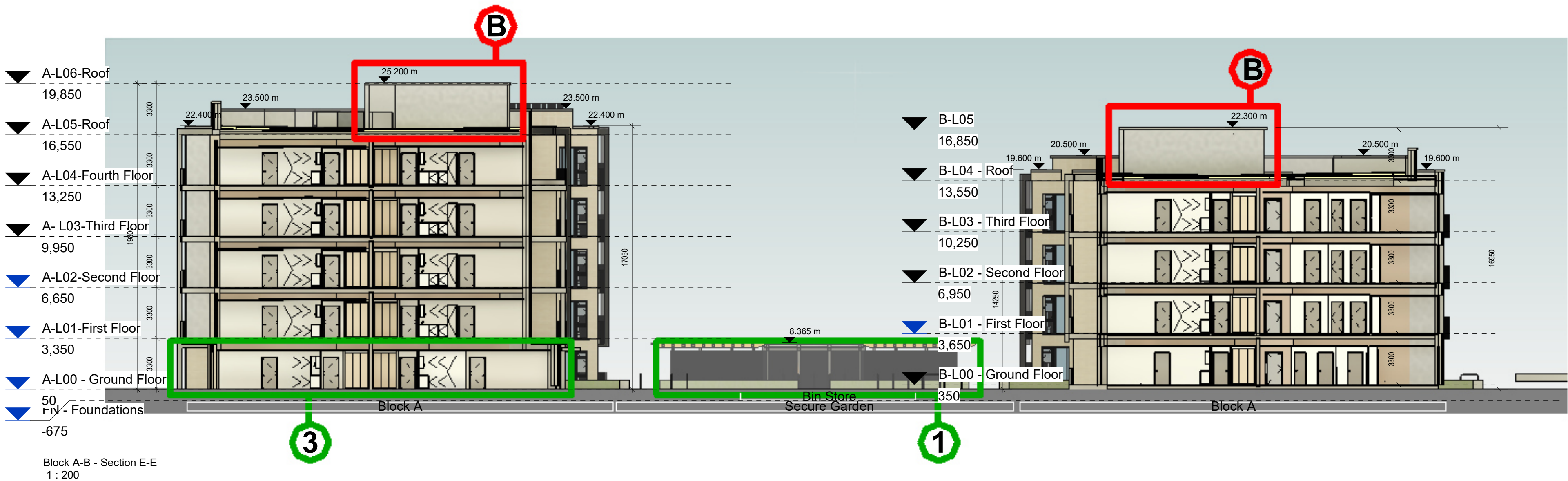
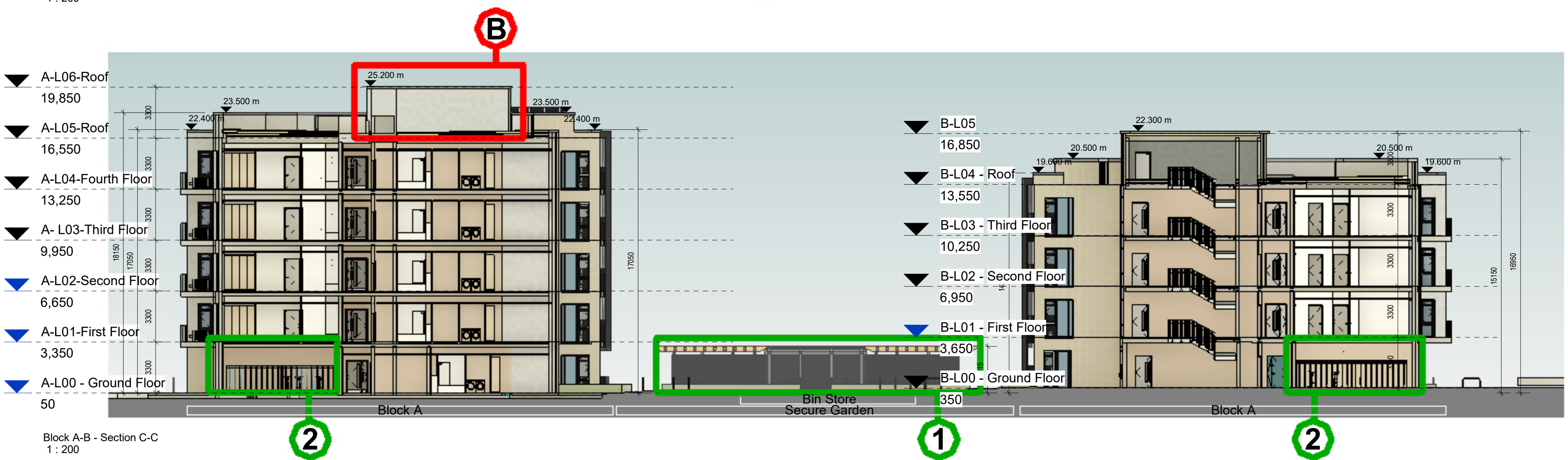


PROPOSED REVISIONS:

1. ESB Sub-Station, Switch Room & Two Separate Bin Enclosures in place of Two Bike Store and a Bin Store.
2. Bike Stores Relocated Internally in place of Redundant Plantrooms.
3. Two Amenity Rooms Replaced with Two 2-Bedroom UD Apartments & Cleaners Store.

PROPOSED REVISIONS:

- A. Site layout changes: Sheffield stands modified or proposed. Number, area and dimensions are specified in the floor plan.
- B. Wall finish changed from Black Brick to Rendered finish as specified in the elevation drawings.
- C. Cycle stands to be removed.

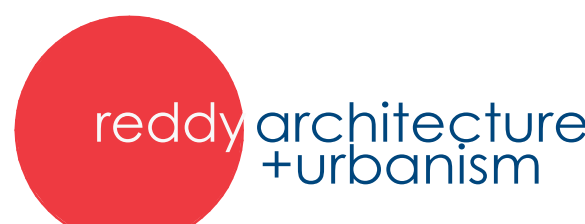


Notes:
- Do not scale from this drawing. Use figured dimensions in all cases.
- Verify dimensions on site and report any discrepancies to the Architect immediately.
- This drawing to be read in conjunction with the Architect's Specification.
- © This drawing is copyright and may only be reproduced with the Architect's permission.

Drawing Notes:
Refer to windows, doors and curtain walling schedules for more information on details and types. Refer to all other referenced architectural drawings for more information.
Refer also to all other consultants drawings, specifications, reports and schedules including: Walsh Goodfellow for structural and civil, Renaissance for MEP information, JGA for fire strategy information, Ryan & Associates for DAC information, AT Urbanism & Landscape for landscape plan boundary details & Amplitude Acoustics for Acoustics.



Issues & Revisions			
Rev.	Date	Drawn	Details of Issue / Revision
P2(S-1)	FEB 2025	CO	Issued for Planning



Derby Mills,
Dartry Road,
Dublin 6,
D06 Y0E3

T: +353 (0)1 498 7000
W: www.reddyarchitecture.com
E: info@reddyarchitecture.com

Client Details:
Voyage Property Limited,
Ashbourne Hall,
Dock Road,
Limerick.

Project Details:
Greenpark Apartments - Blocks A & B
Limerick

Drawing Title:
Proposed Sections - Block Apartments A & B

Job No. **P20-133D** Sheet Size: **A1** Scale @A1: **1:200**

Issue Date: **FEB 2025** Drawn By: **AN** Reviewed By: **RQ**

Status: **S02** Purpose of Issue: **Planning Application**

Project - System - Spatial Zone - Level - Type - Originator - Role - Number

GPL-02-AB-ZZZ-DR-RAU-AR-2001 **P2(S-1)**